



Sky Studios, E16

Weekly Rental Of £400

2 Bedrooms

2 double bedroom apartment in the stylish Sky Studios development, fully fitted kitchen and bathroom, large living area, a pleasant communal courtyard and secure parking, Royal Victoria Gardens is just a stones throw away. King George V Station (0.1 mi) & London City Airport (0.6 mi) This property is scheduled to be redecorated and new flooring throughout.

2 double bedroom Large living area

Private car parking space King George V Station (0.1 mi) & London City Airport (0.6 mi)

Look Property Services
349 Roman Road
Bow, London, E3 5QR

020 8981 9999
info@lookproperty.co.uk

lookproperty.com

Description

2 double bedroom apartment in the stylish Sky Studios development, fully fitted kitchen and bathroom, large living area, a pleasant communal courtyard and secure parking, Royal Victoria Gardens is just a stones throw away. King George V Station (0.1 mi) & London City Airport (0.6 mi) This property is scheduled to be redecorated and new flooring throughout. .

Tenure

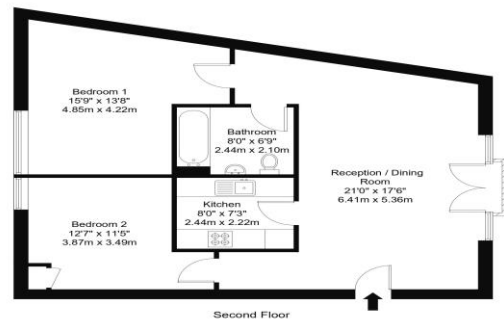
Local Authority

Additional Information

**Viewings Strictly by appointment with
Look Property Services**

Albert Road, E16 2JG

Approx Gross Internal Area = 69.57 sq m / 749 sq ft



Ref :

Copyright **BLEU
PLAN**

The Floor plan is not to scale and measurements and areas shown are approximate and therefore should be used for illustrative purposes only. The plan has been prepared in accordance with the RICS code of Measuring Practice and whilst we have confidence in the information produced it must not be relied on. Maximum lengths and widths are represented on the floor plan. If there is any aspect of particular importance, you should carry out or commission your own inspection of the property. Copyright @ BLEUPLAN



IMPORTANT NOTICE

In accordance with the Property Misdescriptions Act (1991) we have prepared these sales particulars as a general guide to give a broad description of the property. They are not intended to constitute part of an offer or contract. We have not carried out a structural survey and the services, appliances and specific fittings have not been tested. All photographs, measurements, floorplans and distances referred to are given as a guide only and should not be relied upon for the purchase of carpets or any other fixtures or fittings. Lease details, service charges and ground rent (where applicable) are given as a guide only and should be checked and confirmed by your Solicitor prior to exchange of contracts. The copyright of all details, photographs and floorplans remain exclusive to Look Property LLP.